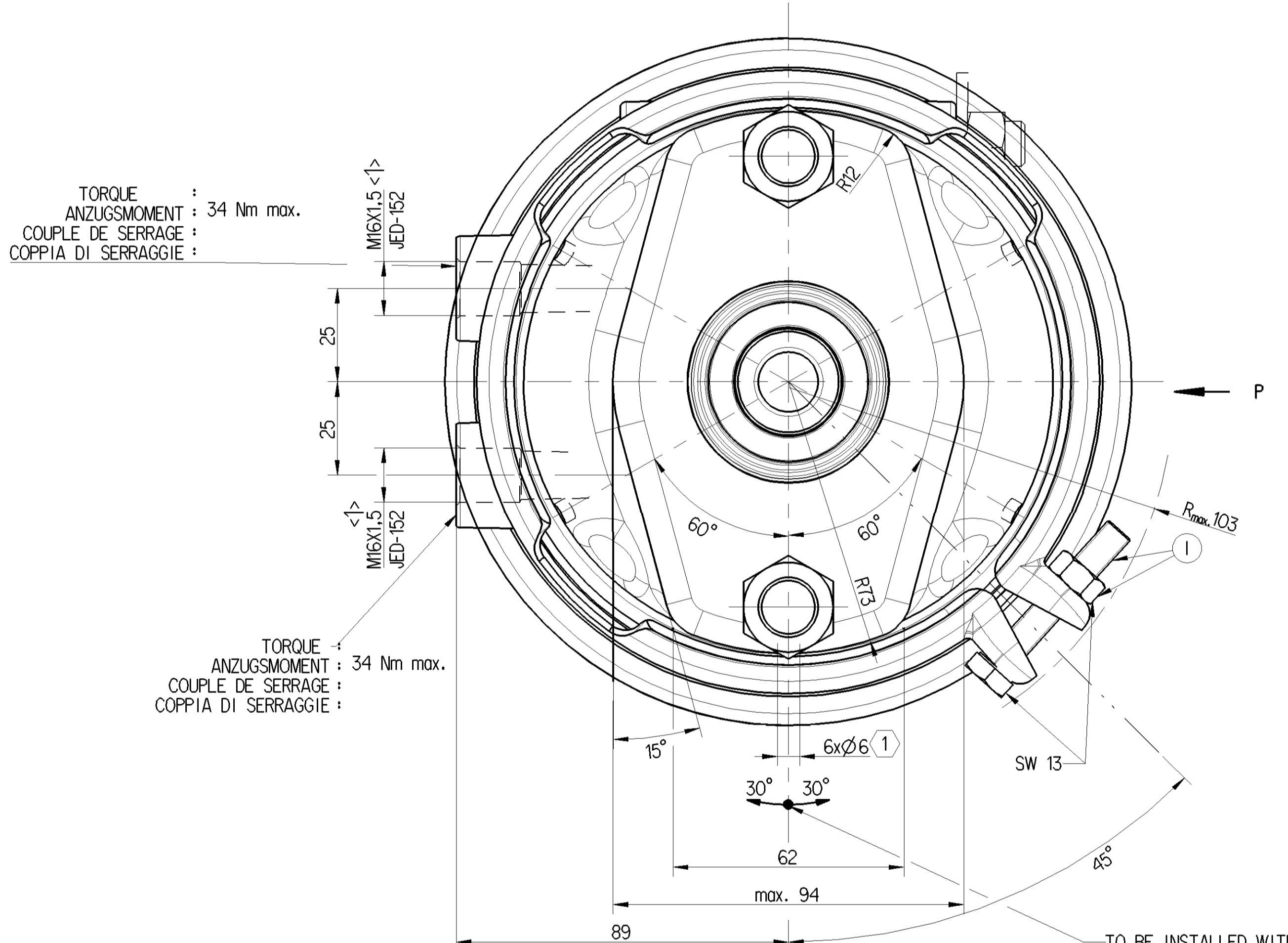
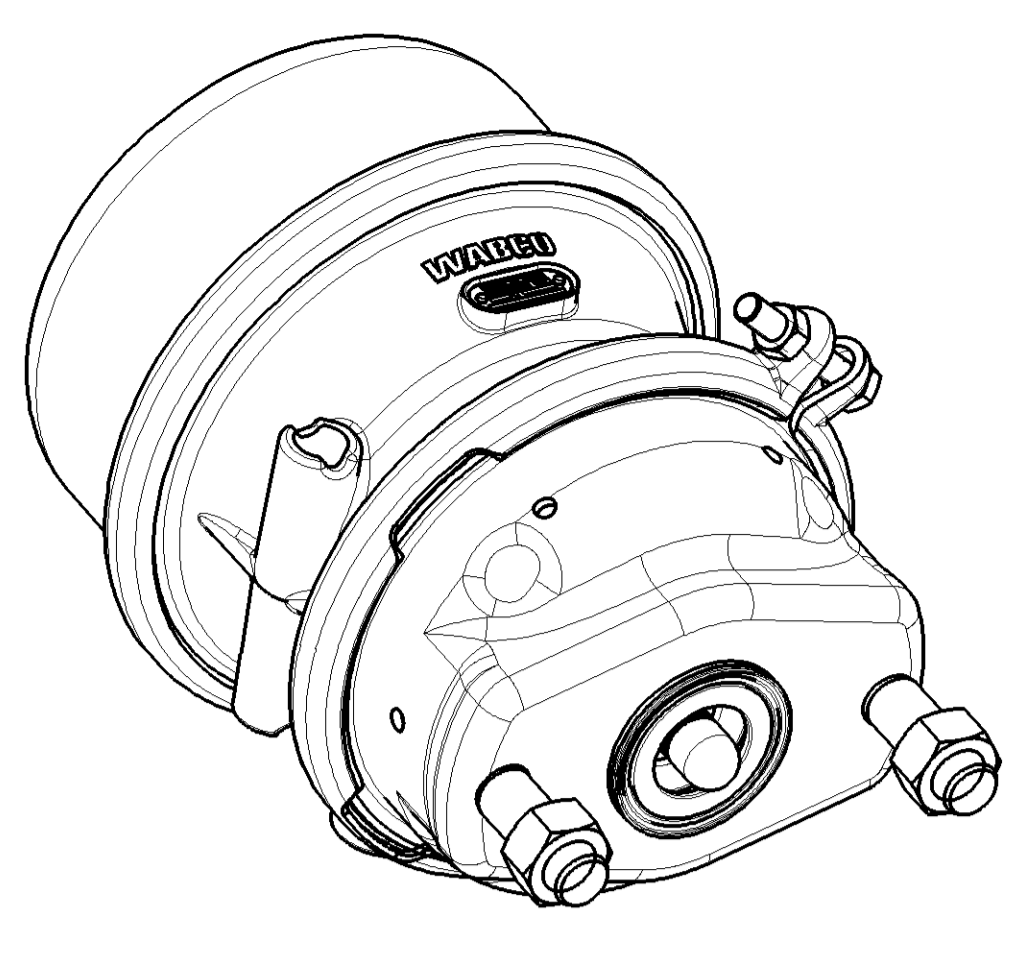
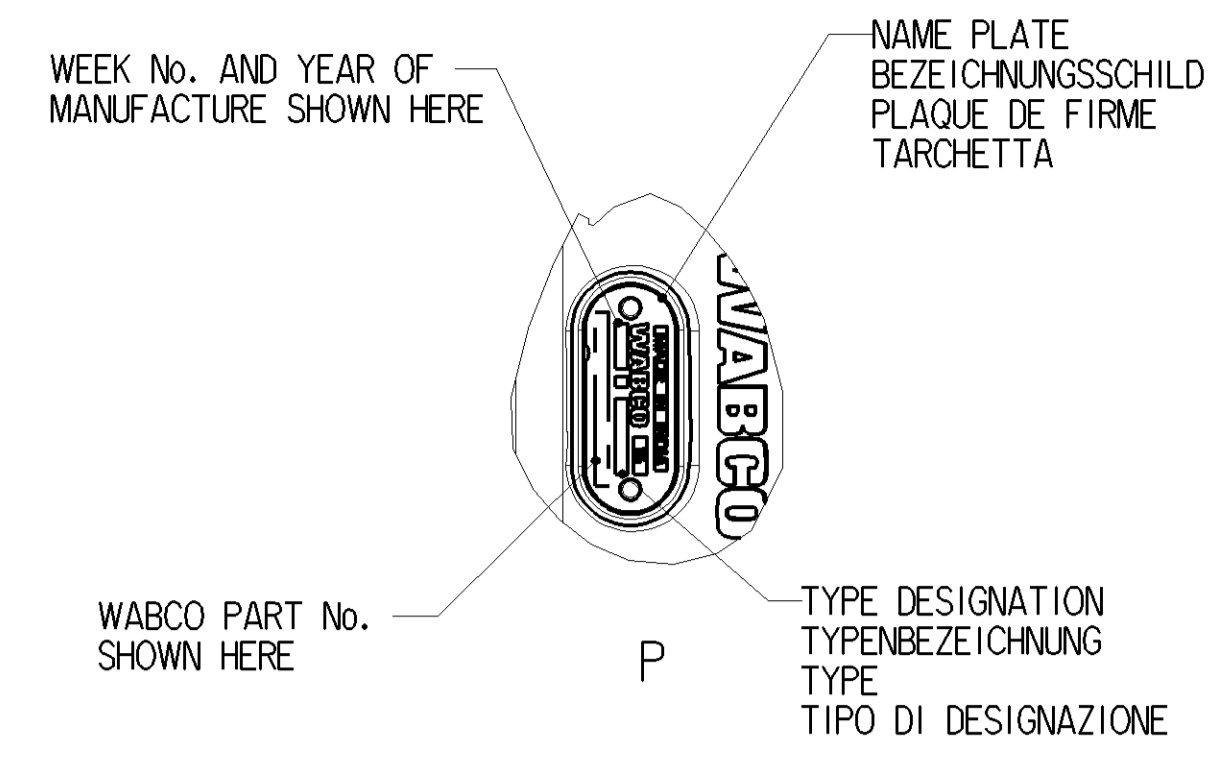
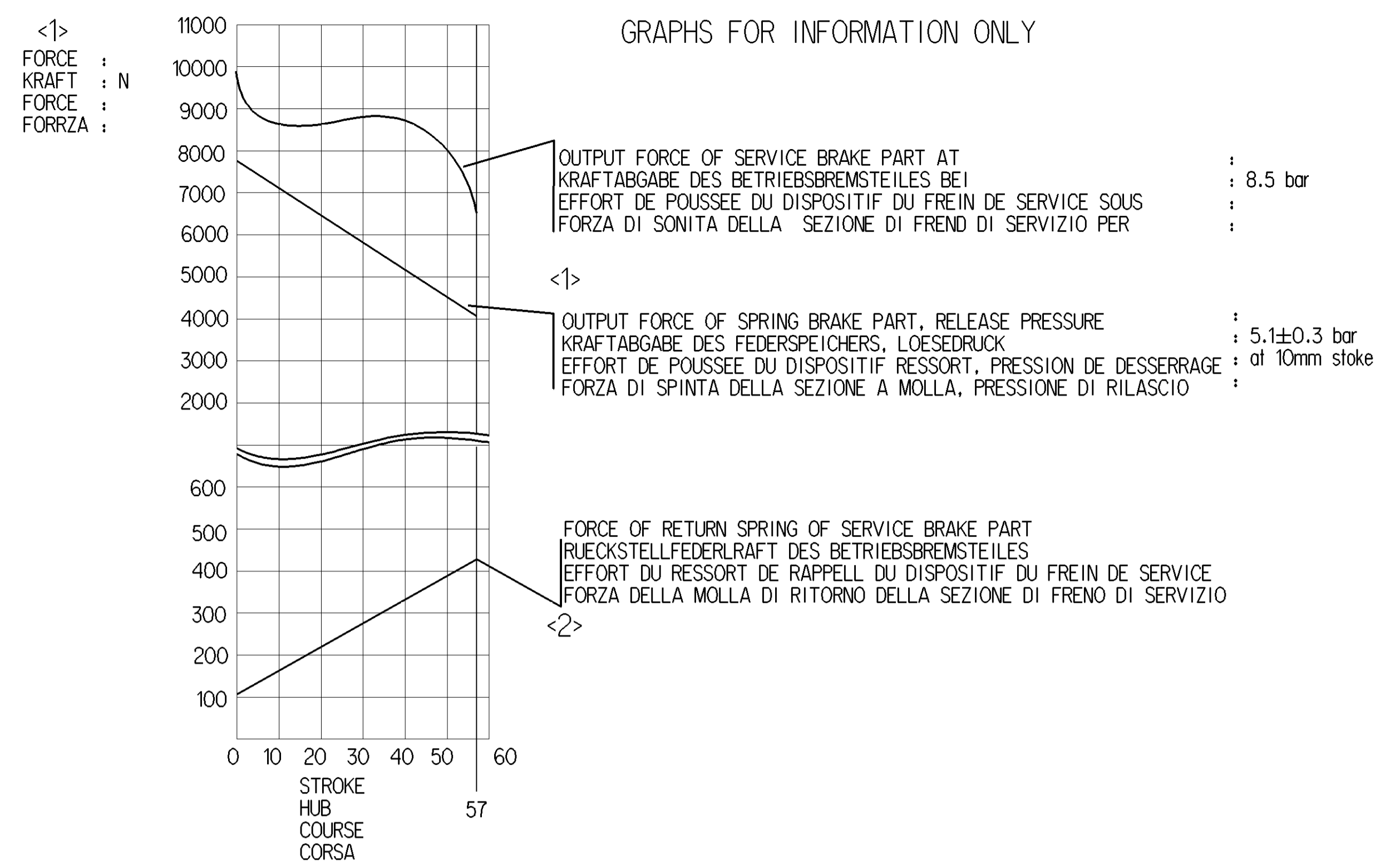


SURFACE PROTECTION	
SI.No.	DESCRIPTION
I	JED-739-3 ZINC NICKEL PASSIVATION
II	JED-240-3 POWDER COATING
III	JED-259-1 CHROMATING
IV	- PLASTIC/RUBBER
V	JED-371-0 PHOSPHATING AND OILING
VI	JED 240-1 PAINTING

MEDIUM	: AIR
MEDIUM	: LUFT
FLUIDE	: AIR
FLUIDO	: ARIA
NOMINAL DIAMETER FOR INLET PORTS	: MIN $\varnothing 9$
DIA.METRE NOMINAL	:
DIAMETRO NOMINALE	:
THERMAL RANGE OF APPLICATION	: -40°C.....+80°C
THERMISCHER ANWENDUNGSBEREICH	:
BAMME D'APPLICATION TERMIEUE	:
CAMPO DI APPLICAZIONE TERMICA	: <1>
11 STROKE	: 57 mm min. <1>
HUB	:
COURSE	:
CORSA	:
12 STROKE	: 57 mm min. <1>
HUB	:
COURSE	:
CORSA	:
DEFLECTION	: AT STROKE
AUSLENKUNG	: 4° max BEI HUB
DEFLEXION	: A COURSE
EEVIAZION	: A CORSA
WIDTH ACROSS FLATS	:
SCHLUESSELWEITE	: <2>
SURPLATS	:
LAGEZZA IN CHIAVE	:
OPEN BREATHER HOLE	:
OFFEN ATMUNGSBOHRUNG	:
VERT TRACU RENIFLEUR	:
APERTO FORO RESPIRATORE	:

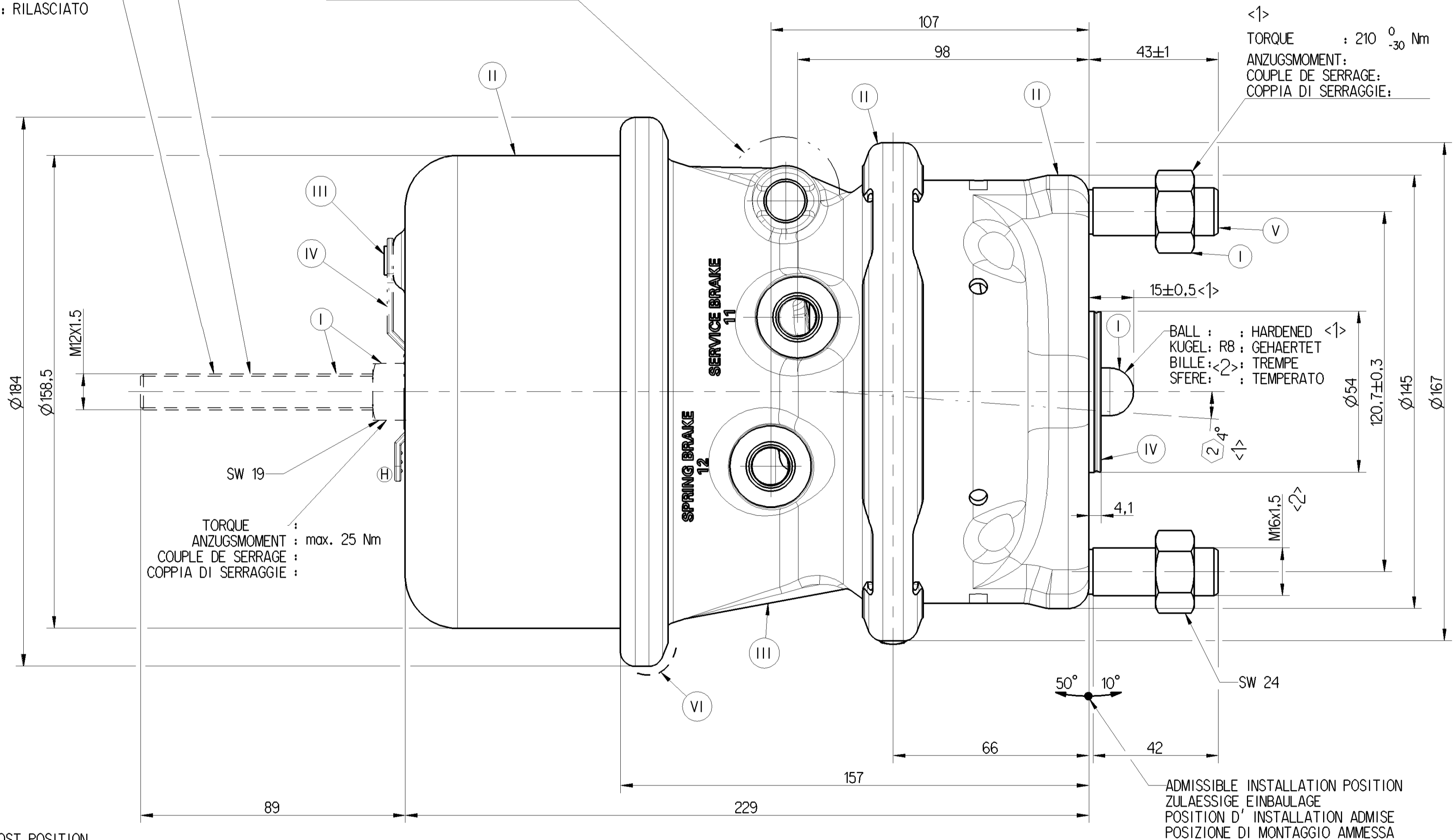


TO BE INSTALLED WITH THE BREATHER HOLE OPEN AT BOTTOM MOST POSITION
 IM EINBAUZUSTAND UNTERE A ATMUNGSBOHRUNG OFFEN
 A MONTER AVEC LE RENIFLARD INFERIEUR OUVERT
 INSTALLAZIONE CON IL FORO DI SFIATOFERIORE APERTO

RELEASED POSITION LOESESTELLUNG POSITION DE DESSERRAGE POSIZIONE DI RILASCIO

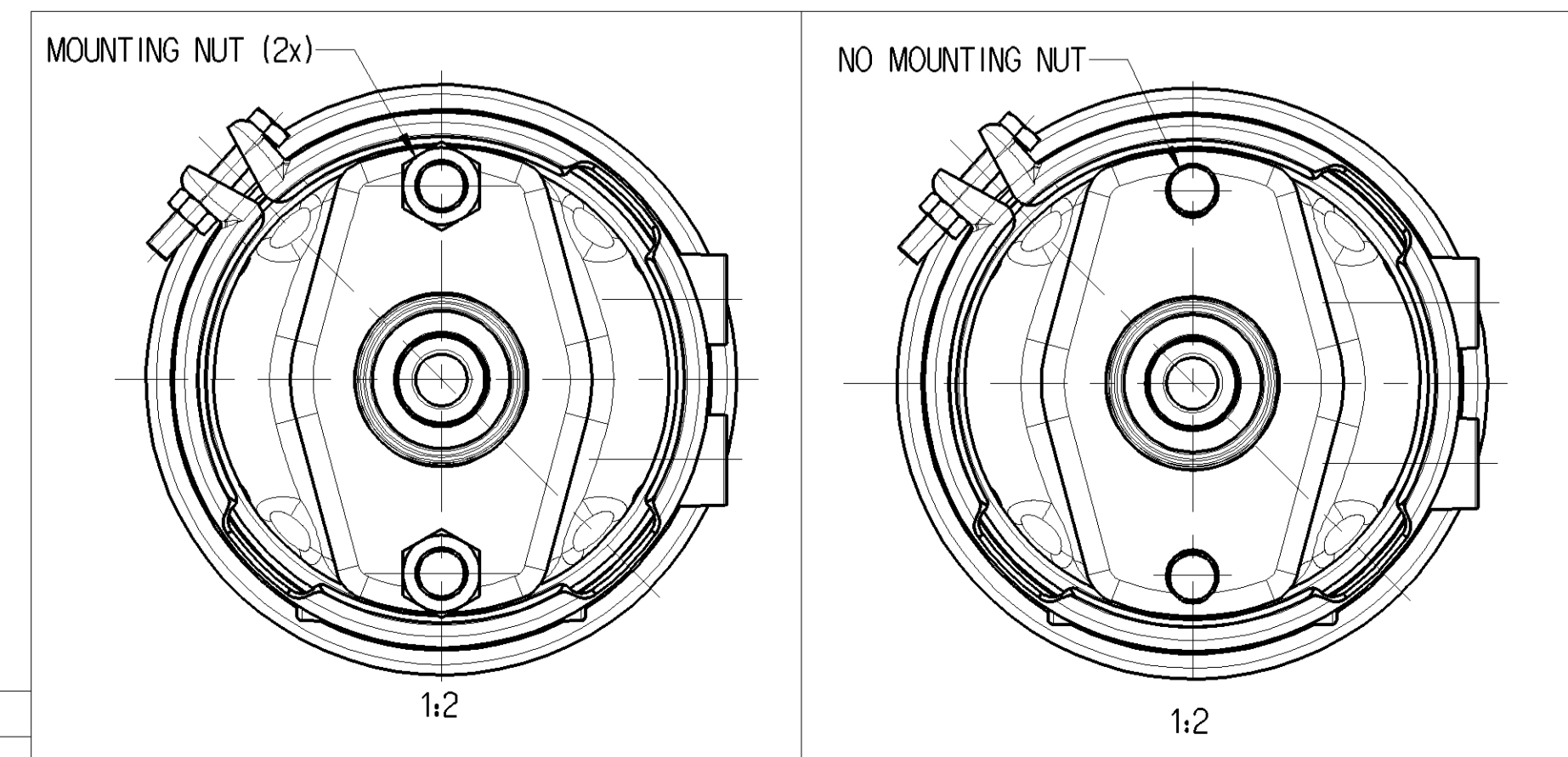
<2> CONDITION AS SUPPLIED : RELEASED ANLIEFERUNGSZUSTAND : GELOEST ETAT DE LIVRAISON : DESSERRE STATO DI FORNITURA : RILASCIATO

FIXTURE OF RELEASE BOLT TORQUE LOESCHRAUBENHALTER ANZUGSMOMENT : 22.5 ±2.5 Nm SUPPORT DE LA VIS DE DESSERRAGE COUPLE DE SERRAGE : COPPIA DI SERRAGGIE :



AIR VOLUME OF SERVICE BRAKE PART AT 2/3 STROKE	:	510 cm ³
HUBVOLUMEN DES BETRIEBSBREMSTEILES BEI 2/3 HUB	:	
VOLUME D' AIR DU DISPOSITIF DU FREIN DE SERVICE A 2/3 DE LA COURSE	:	
VOLUME D' ARIA DELLA SEZIONE A MOLLA	:	
PORT : SERVICE BRAKING SYSTEM, WORKING PRESSURE	:	Pmax 10.5bar (TEMPORARILY : Pmax 13 bar)
ANSCHLUSS : 11 BETRIEBSBREMSANLAGE, BETRIEBSDRUCK	:	(DE COURTE DUREE : (BREVE TEMPO SOLO)
ORIFICE : DISPOSITIF DE FREINAGE DE SERVICE, PRESSION D'UTILISATION	:	
ORIFIZIO : DISPOSITIVO DI FRENATURA DI SERVIZIO, PRESSIONE DI ESERCIZIO	:	
PORT : SPRING BRAKE CYLINDER WORKING PRESSURE	:	Pmax 8.5 bar (TEMPORARILY : Pmax 10 bar)
ANSCHLUSS : 12 BETRIEBSBREMSANLAGE, BETRIEBSDRUCK	:	(DE COURTE DUREE : (BREVE TEMPO SOLO)
ORIFICE : CYLINDRE A RESSORT, PRESSION, D'UTILISATION	:	
ORIFIZIO : CILINDRO A MOLLA, PRESSIONE DI ESERCIZIO	:	

925 384 017 0	NO	-6.65
925 384 010 0	YES	-6.7
WABCO PART No.	MOUNTING NUT (2x)	MASS (Kg)



General Specifications	JED-334-1, Size ISO 14420 LP	Design WABCO®	WABCO
Further Technical Data	925 384 000 0	Drawn	System
Doc. Code: 035	Sheet: 1 To: 7	2018-07-25	Viewatron M
General Tolerances	ISO 2011	2018-07-26	Smithkumar
Range of Nominal Dimensions (± mm)		1:1	1:2
Class	± 0.10 ± 0.15 ± 0.20 ± 0.30 ± 0.40 ± 0.50 ± 0.63 ± 0.80 ± 1.00 ± 1.25 ± 1.60 ± 2.00 ± 2.50 ± 3.15 ± 4.00 ± 5.00 ± 6.30 ± 8.00 ± 10.00 ± 12.50 ± 16.00 ± 20.00 ± 25.00 ± 31.50 ± 40.00 ± 50.00 ± 63.00 ± 80.00 ± 100.00 ± 125.00 ± 160.00 ± 200.00 ± 250.00 ± 315.00 ± 400.00 ± 500.00 ± 630.00 ± 800.00 ± 1000.00	925 384 010 0	053 ML 1/1
Material	Steel	Revision	1
Size	20, 22, 24, 26, 28, 30, 32, 34, 36, 38, 40, 42, 44, 46, 48, 50, 52, 54, 56, 58, 60, 62, 64, 66, 68, 70, 72, 74, 76, 78, 80, 82, 84, 86, 88, 90, 92, 94, 96, 98, 100, 102, 104, 106, 108, 110, 112, 114, 116, 118, 120, 122, 124, 126, 128, 130, 132, 134, 136, 138, 140, 142, 144, 146, 148, 150, 152, 154, 156, 158, 160, 162, 164, 166, 168, 170, 172, 174, 176, 178, 180, 182, 184, 186, 188, 190, 192, 194, 196, 198, 200	177306	884 013 878 0
Tapped holes acc.	JED-152	Scale	1:1
Tolerance class	Applied Dimensioned	Material	Steel

