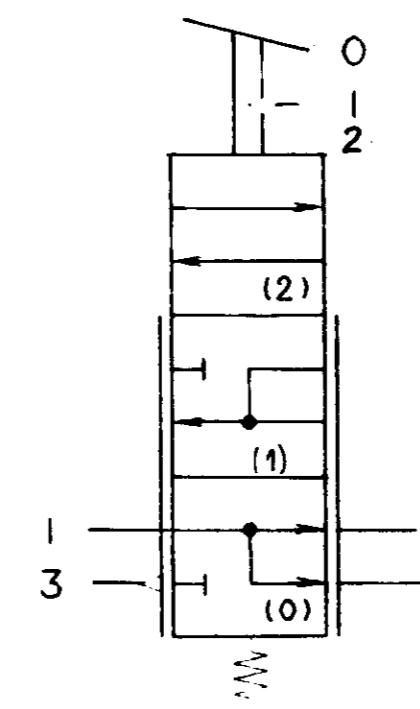


- MARKING OF PORTS  
KENNZEICHNUNG DER ANSCHLUESSE  
MARQUAGE DES ORIFICES  
MARCATURA DEGLI ORIFIZI
- 1 SUPPLY  
VORRAT  
ALIMENTATION  
ALIMENTAZIONE
  - 21 SPRING BRAKE CYLINDER  
FEDERSPEICHERZYLINDER  
CYLINDRE A RESSORT  
CILINDRO A MOLLA
  - 22 TRAILER CONTROL VALVE  
ANHAENGER STEUVENTIL  
VALVE DE CONTROLE DE REMORQUE  
VALVOLA DI CONTROLLO DI RIMORCHIO
  - 3 EXHAUST  
ENTLUEFTUNG  
ECHAPPEMENT  
SCARICO

TESTING SCHEME  
SYMBOL  
SCHEMA DE PRINCIPE  
SCHEMA DI PRINCIPIO



GENERAL DATA  
ALLGEMEINE DATEN  
CARACTERISTIQUES GENERALES  
CARATTERISTICHE GENERALI

MEDIUM : AIR  
MEDIUM : LUFT  
FLUIDE : AIR  
FLUIDO : ARIA

THERMAL RANGE  
THERM ANWENDUNGSBEREICH  
TEMPERATURE D'UTILISATION  
TEMPERATURA DI UTILIZZAZIONE

-40° C.....+80° C

P1 = 10 BAR MAX.

P2 = 6.8±0.7 BAR FOR  
FUER POUR P1 = 10 BAR  
POUR PER

FURTHER TECHNICAL DATA SEE		L		COPYRIGHT		WABCO	
IDENTIFICATION NO.	DATE	DESIGNER	SIGNATURE	DATE	CHECKED	HAND BRAKE VALVE	
CODE FOR DOCUMENT: 605 SHEET: TO	90-05-02	COURTAT		90-05-02	BION	HANDBREMSVENTIL	
GENERAL TOLERANCES				STANDARDIZATION			
RANGE OF NOMINAL DIMENSIONS (mm)				91-02-19 90111			
CLASS	II	250	> 80	1100	> 400	PRODUCT IDENTIFICATION NO.	
		0.5	1.0	1.5	2.0	SCALE	0.85
		1.0	2.0	3.0	4.0	SIZE	1.1
		2.0	3.5	5.0	6.5	DATE	A 1 210
TAPPED HOLES ACC. ISO 4017 / ISO-182				DCH-NO. REV. DATE			
11 TOLERANCE CLASS APPLIED CIRCUMFERED				521			
EXPERT CODE		TYPE OF PRODUCT		884 605 127 0		884 605 127 0	