

FIRST ANGLE PROJECTION

LABEL MARKED WITH :-

1. PRODUCTION PLANT
2. DATE OF MANUFACTURE
3. REVISION LEVEL
4. PART NUMBER

SCHILD MIT AUFSCHRIFT:-

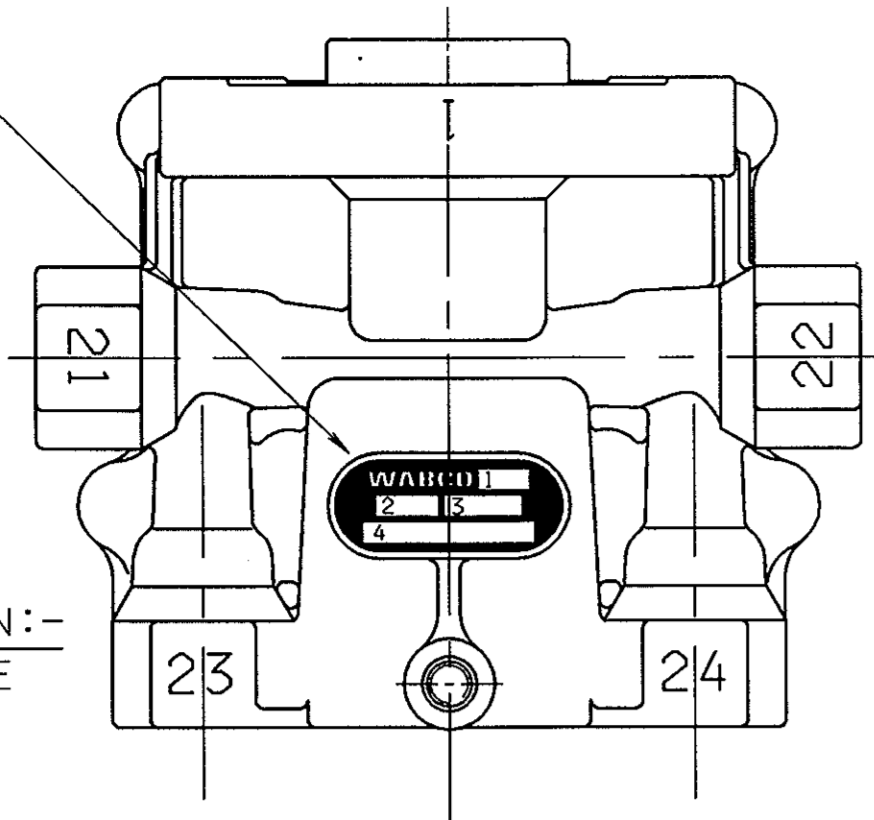
1. FERTIGUNGSWERK
2. HERSTELLDATUM
3. ANDERUNGSSTAND
4. TEILE NR.

ETIQUETTE COMPORTANT:-

1. USINE DE PRODUCTION
2. DATE DE FABRICATION
3. NIVEAU DE REVISION
4. NO. DE PIECE

ETICHETTA CONTRASSEGNA CON:-

1. STABILIMENTO DI PRODUZIONE
2. DATA DI FABBRICAZIONE
3. LIVELLO DI REVISIONE
4. PARTICOLARE NO.

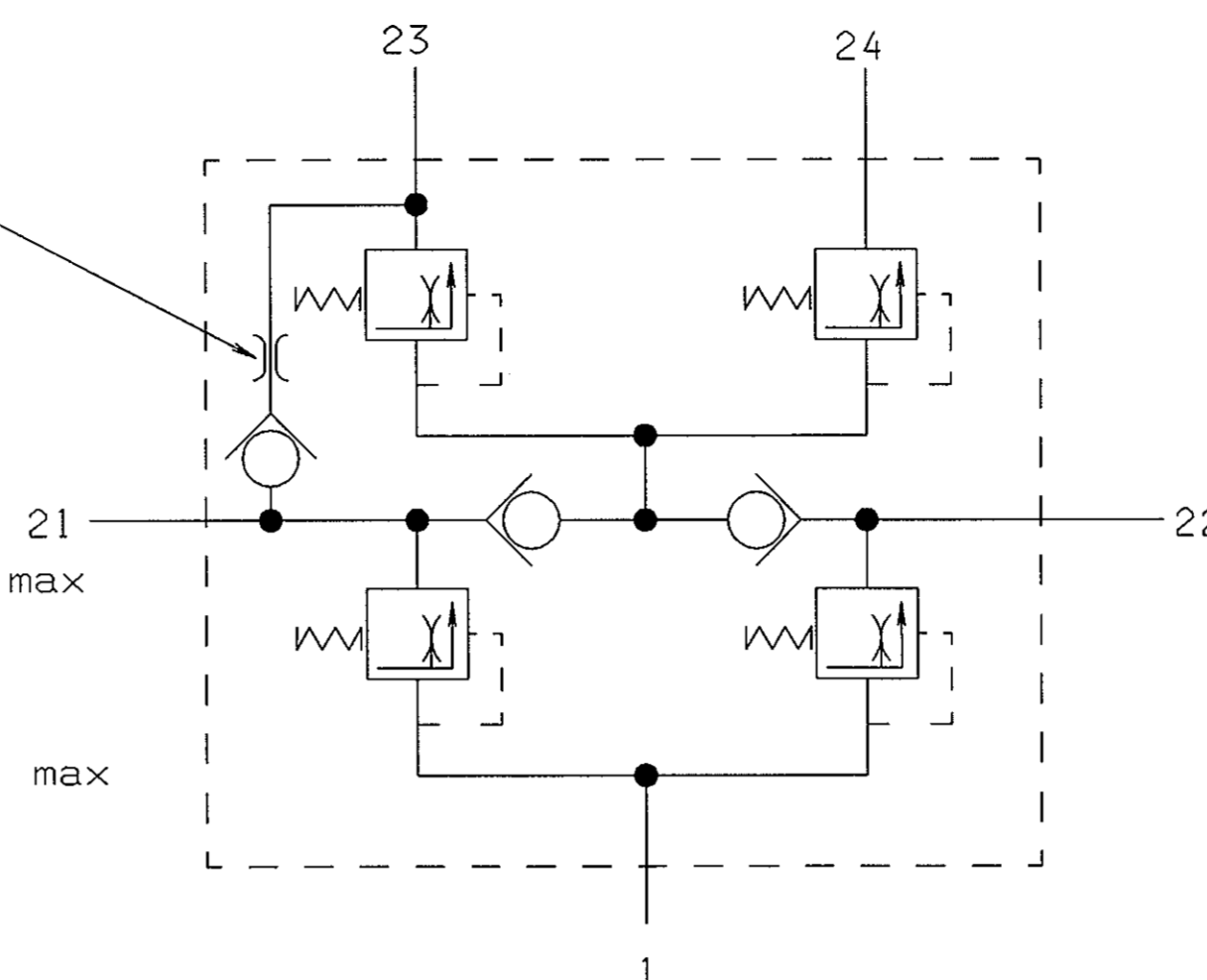


FLOW RATE = 16-35 l/min
AT P₂₃=8, P₂₁=0 bar
WHEN P₂₁ DROPS TO ZERO
RETAINED P₂₃=1bar max

DURCHFLOSSMENGE = 16-35 l/min
BEI P₂₃=8, P₂₁=0 bar
WENN P₂₁ AUF NULL ABFALLT
GESICHERTER DRUCK P₂₃=1 bar max

DEBIT = 16-35 l/min
SOUS P₂₃=8, P₂₁=0 bar
SI P₂₁ TOMBE A ZERO
LA PRESSION MAINTENUE A P₂₃=1 bar max

PORTATA = 16-35 l/min
PER P₂₃=8, P₂₁=0 bar
SE P₂₁ CALC A ZERO
LA PRESSIONE MANTENUTA A P₂₃=1 bar max



ADMISSIBLE TEMPERATURES.
THERMISCHER ANWENDUNGSBEREICH.
TEMPERATURE DE SERVICE -40°C TO +90°C
TEMPERATURA D'ESERCIZIO.

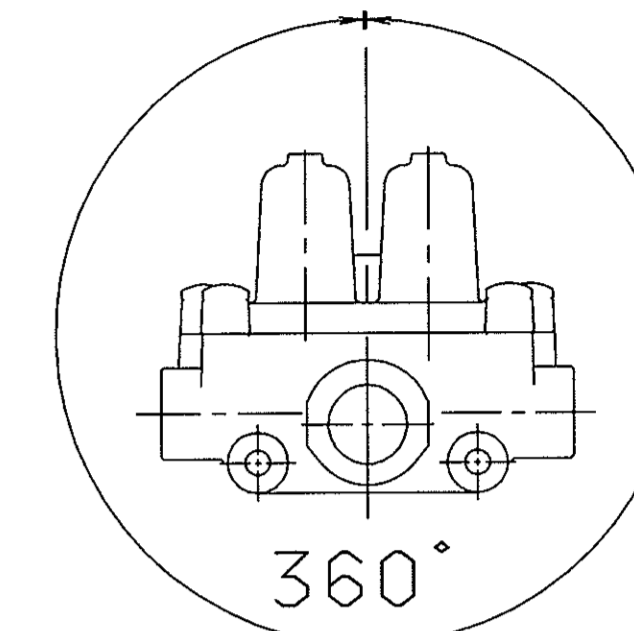
SERVICE PRESSURE.
BETRIEBSDRUCK. MAX 13 bar.
PRESSION DE SERVICE.
PRESSIONE D'ESERCIZIO.

MEDIUM AIR
MEDIUM LUFT.
MILIEU AIR.
FLUIDO ARIA.

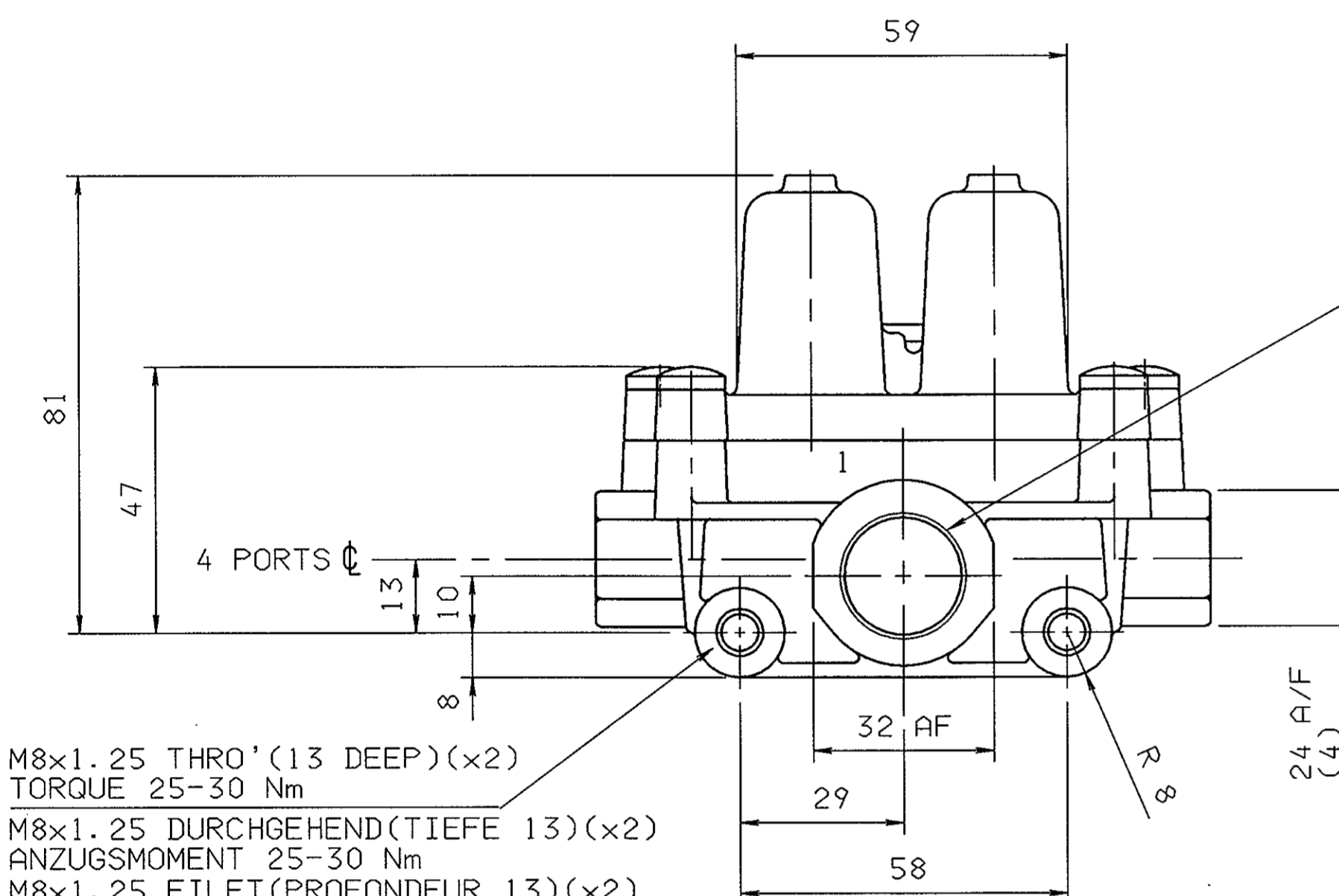
CONNECTIONS
ANSCHLUESSE
ORIFICES
ORIFIZI

SUPPLY
LUFTEINTRITT
ALIMENTATION
ALIMENTAZIONE

- | | | |
|-----|------------|-------------|
| | CIRCUIT 1 | CIRCUIT 2 |
| 21- | KREIS 1 | 22- KREIS 2 |
| | CIRCUIT 1 | CIRCUIT 2 |
| | CIRCUITO 1 | CIRCUITO 2 |
| | CIRCUIT 3 | CIRCUIT 4 |
| 23- | KREIS 3 | 24- KREIS 4 |
| | CIRCUIT 3 | CIRCUIT 4 |
| | CIRCUITO 3 | CIRCUITO 4 |



VALVE MAY BE MOUNTED AT ANY ANGLE
VENTIL KANN IN BELIEBIGER LAGE MONTIERT WERDEN
LA SOUPEPE PEUT ETRE INSTALLEE A N'IMPORTE QUEL ANGLE
VALVOLA MONTABILE A QUALSIASI ANGOLO



PORT 1
M22x1.5-6H x16 FULL THREAD
JED 152
TORQUE 55 Nm MAX.

ANSCHLUESSE 1
M22x1.5-6H x16 DURCHGEHENDES GEWINDE
JED 152
ANZUGSMOMENT 55 Nm MAX.

ORIFICES 1
M22x1.5-6H x16 FILET COMPLET
JED 152
COUPLE DE SERRAGE 55 Nm MAX.

ORIFIZI 1
M22x1.5-6H x16 FILETTATURA COMPLETA
JED 152
COPPIA DI SERRAGGIO 55 Nm MAX.

(x4)
M16x1.5-6H x13 FULL THREAD
JED 152
TORQUE 35 Nm MAX.

M16x1.5-6H x13 DURCHGEHENDES GEWINDE
JED 152
ANZUGSMOMENT 35 Nm MAX.

M16x1.5-6H x13 FILET COMPLET
JED 152
COUPLE DE SERRAGE 35 Nm MAX.

M16x1.5-6H x13 FILETTATURA COMPLETA
JED 152
COPPIA DI SERRAGGIO 35 Nm MAX.

ADJUSTING SCREWS SECURED
AGAINST TAMPERING WITH
LOCTITE AFTER TEST.

NACH PRUFUNG MIT LOCTITE
GEGEN UNBEFUGTE
EINGRIFFE GESICHERT

VIS DE REGLAGE FIXEES
AVEC LOCTITE PAR
SECURITE APRES ESSAI

VITI DI REGOLAZIONE
FISSATE CONTRO
MANOMISSIONE CON LOCTITE
DOPO LE PROVE

CORROSION PROTECTION:-

ALUMINIUM PARTS CHROMATED
TO JED-259
SCREWS MECHANICALLY ZINC PLATED
AND YELLOW PASSIVATED
(FORD SPEC. S71M)

KORROSIONSSCHUTZ

ALUMINIUMTEILE CHROMIERT
GEMASS JED-259
SCHRAUBEN MECHANISCH VERZINKT
UND GELB PASSIVIERT
(FORD SPEZIFIKATION S71M)

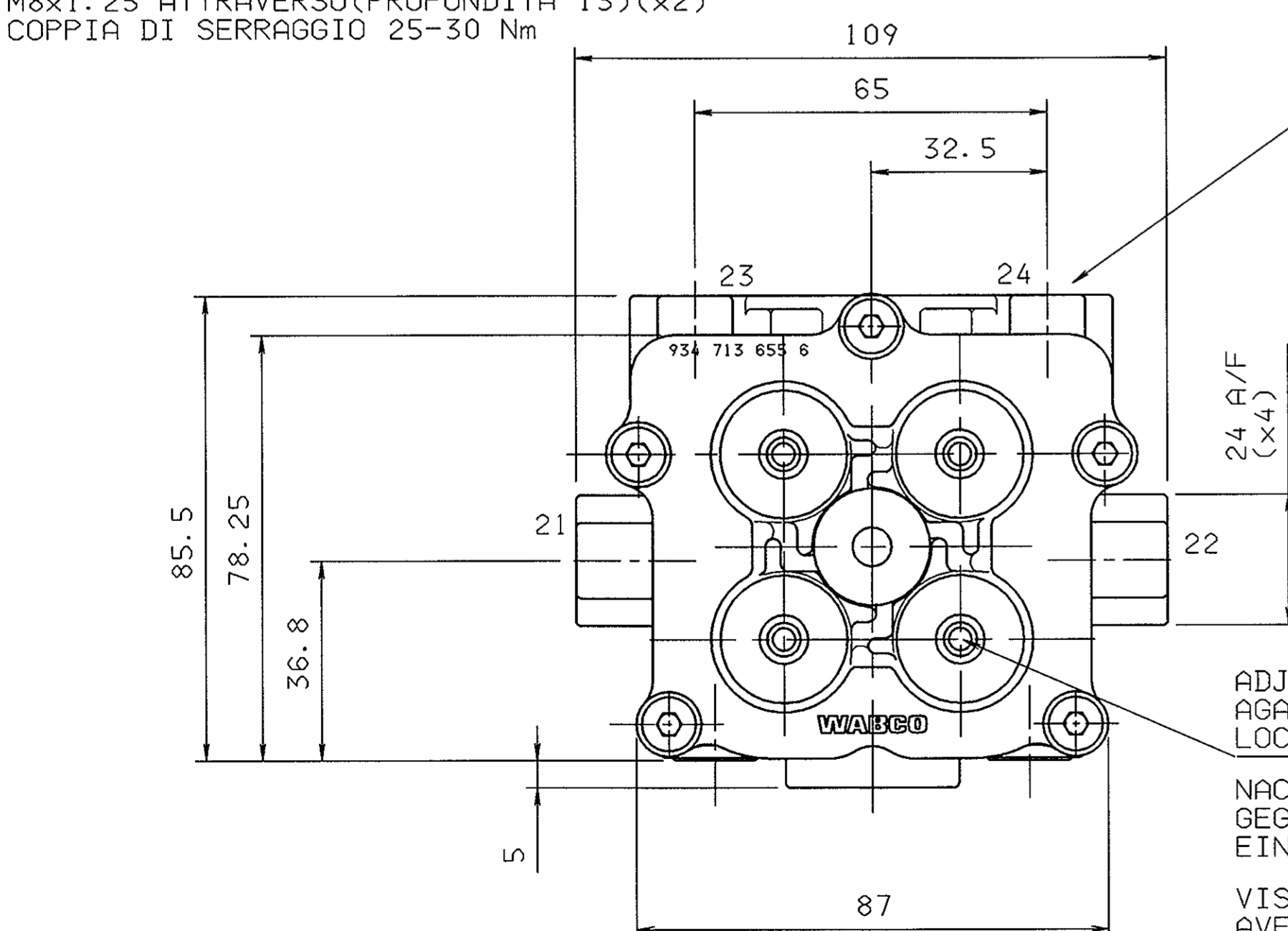
PROTECTION ANTICORROSIVE

PIECES ALUMINIUM CHROMEES
POUR JED-259
VIS MECANIQUEMENT ZINGUEES
ET PASSIVEES EN JAUNE
(SPEC.FORD S71M)

PROTEZIONE ANTICORROSIONE

PEZZI IN ALUMINIO CROMATI
PER JED-259
VITI MECCANICAMENTE ZINCATE
E PASSIVATE IN GIALLO
(SPEC.FORD S71M)

PORTS ORIFICES	ANSHLUESSE ATTACCHI	21	22	23	24
OPENING PRESSURE DYNAMIC OEFFNUNGSDRUCK DYNAMISCH PRESSION DE OUVERTURE DYNAM PRESSIONE DI APERTURA DINAM	BAR	7.9 ⁺⁰ _{-0.3}	7.9 ⁺⁰ _{-0.3}	8.3 ⁺⁰ _{-0.3}	7.9 ⁺⁰ _{-0.3}
CLOSING PRESSURE DYNAMIC SCHLISSDRUCK DYNAMISCH PRESSION DE FERMETURE DYNAM PRESSIONE DI CHIUSURA DINAM	BAR	≥ 6.0			
CLOSING PRESSURE STATIC AT FAILURE OF CIRCUIT SCHLISSDRUCK STATISCH BEI AUSFALL VON KREIS PRESSION DE FERMETURE STATIQUE EN CAS DE DEFAILLANCE DU CIRCUIT PRESSIONE DI CHIUSURA STATICA IN CASO DI DIFETTO DEL CIRCUITO	BAR	0	≥ 4.5	≥ 4.5	≥ 4.5
		≥ 4.5	0	≥ 4.5	≥ 4.5
		≥ 4.5	≥ 4.5	0	≥ 4.5
		≥ 4.5	≥ 4.5	≥ 4.5	0



DRAWING PRODUCED ON CADAM
MANUAL CHANGES PROHIBITED

DIMENSIONS IN MILLIMETRES

FURTHER TECHNICAL DATA SEE		L	COPYRIGHT	
IDENTIFICATION No.:		K	DATE	SIGNATURE
CODE FOR DOCUMENT:	SHEET: TO	J	19/06/001 P.S. Wellings	
GENERAL TOLERANCES		H	CHECKED	
RANGE OF NOMINAL DIMENSIONS (mm)		G	18/09/001 J. HALL	
CLASS	II	F	EXPERT CODE	18/09/00
	III	E	319	J. HALL
		D	MASS	SCALE
		C	1.1 kg	1:1
		B	SIZE	T.R.T
		A	301548	A 24/10/00
I) TOLERANCE CLASS APPLIED CROSSMARKED		ECN-No	REV	DATE
		5120		

WABCO
QUADRUPLE CIRCUIT PROTECTION VALVE.
VIERKREIS - SCHUTZVENTIL.
VALVE DE PROTECTION LA 4 CIRCUITS.
VALVOLA DI PROTEZIONE LA 4 CIRCUITI.

PRODUCT SPECIFICATION No
934 714 320 0
DOCUMENT CODE 605
SHEET 1/1
REPLACEMENT FOR