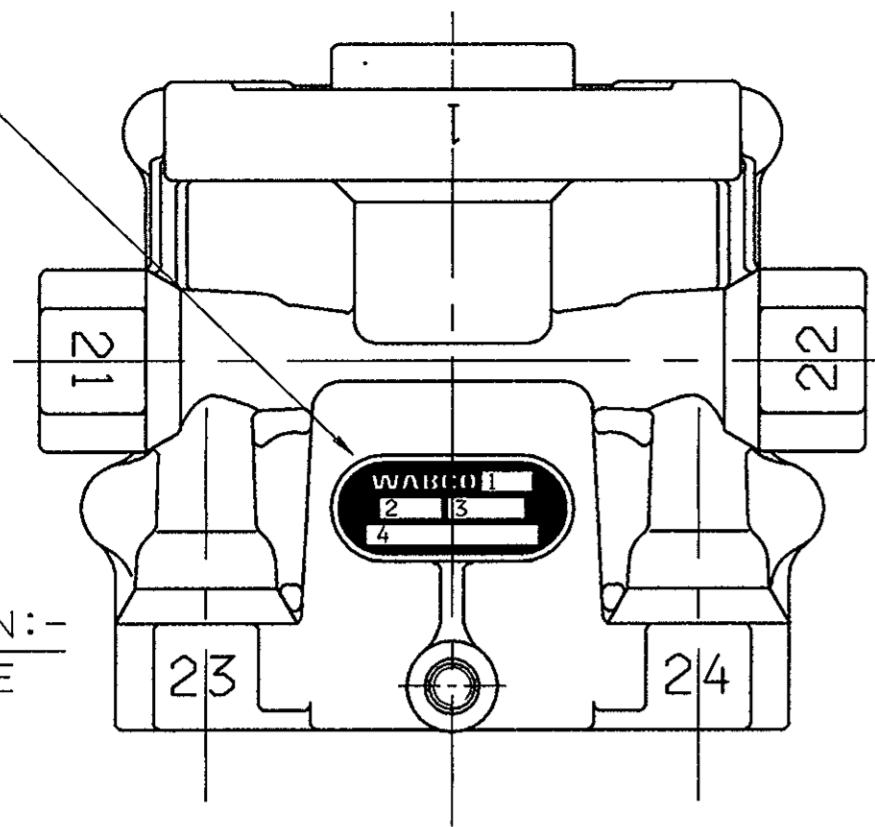


LABEL MARKED WITH :-
 1. PRODUCTION PLANT
 2. DATE OF MANUFACTURE
 3. REVISION LEVEL
 4. PART NUMBER

SCHILD MIT AUFSCHRIFT:-
 1. FERTIGUNGSWERK
 2. HERSTELLDATUM
 3. ANDERUNGSSTAND
 4. TEILE NR.

ETIQUETTE COMPORTANT:-
 1. USINE DE PRODUCTION
 2. DATE DE FABRICATION
 3. NIVEAU DE REVISION
 4. NO. DE PIECE

ETICHETTA CONTRASSEGATA CON:-
 1. STABILIMENTO DI PRODUZIONE
 2. DATA DI FABBRICAZIONE
 3. LIVELLO DI REVISIONE
 4. PARTICOLARE NO.



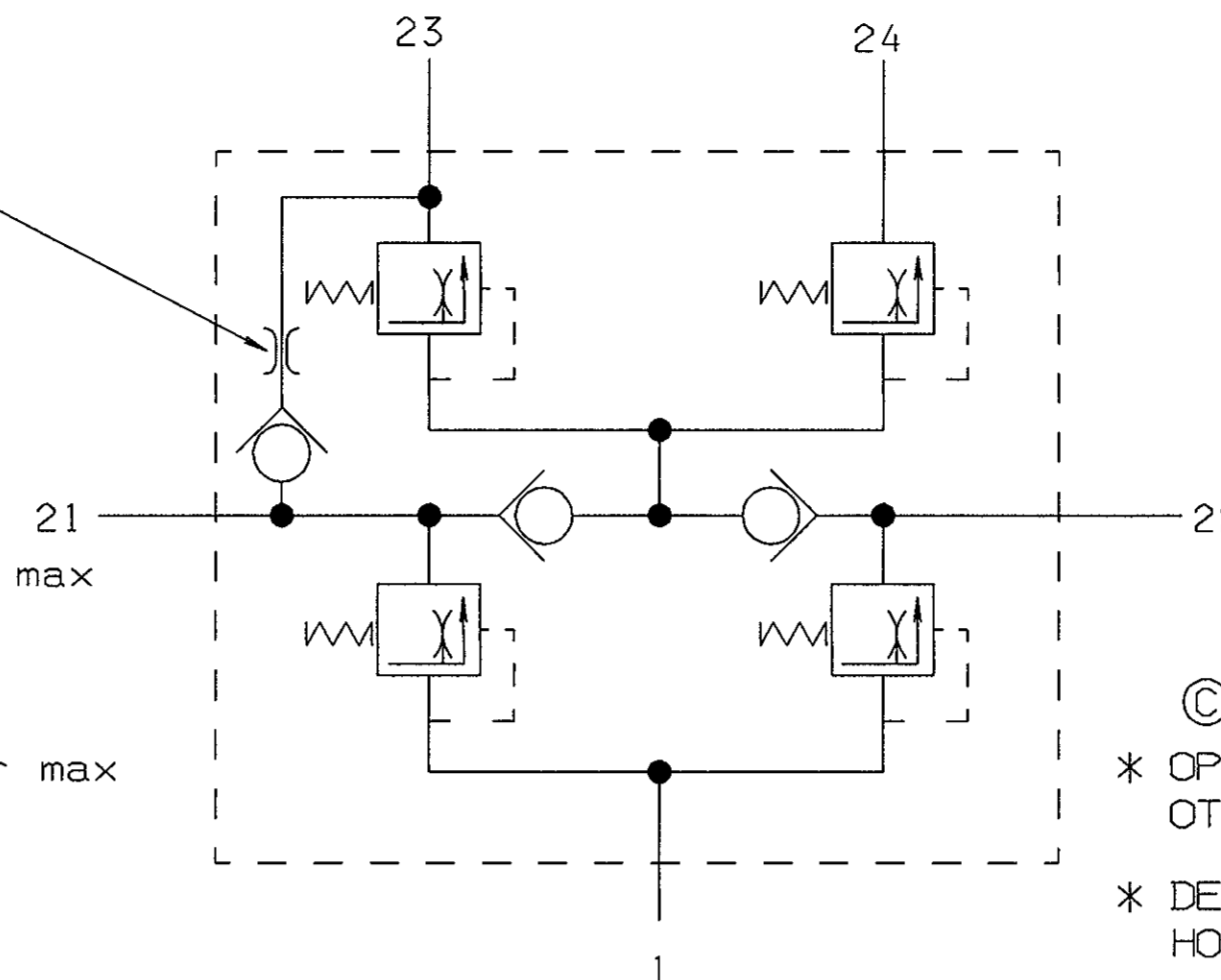
FIRST ANGLE PROJECTION

FLOW RATE = 16-35 l/min
 AT P₂₃=8, P₂₁=0 bar
 WHEN P₂₁ DROPS TO ZERO
 RETAINED P₂₃=1 bar max

DURCHFLOßMENGE = 16-35 l/min
 BEI P₂₃=8, P₂₁=0 bar
 WENN P₂₁ AUF NULL ABFALLT
 GESICHERTER DRUCK P₂₃=1 bar max

DEBIT = 16-35 l/min
 SOUS P₂₃=8, P₂₁=0 bar
 SI P₂₁ TOMBE A ZERO
 LA PRESSION MAINTENUE A P₂₃=1 bar max

PORTATA = 16-35 l/min
 PER P₂₃=8, P₂₁=0 bar
 SE P₂₁ CALCA A ZERO
 LA PRESSIONE MANTENUTA A P₂₃=1 bar max



CONNECTIONS
 ANSCHLUESSE
 ORIFICES
 ORIFIZI

1 - SUPPLY
 LUFTEINTRITT
 ALIMENTATION
 ALIMENTAZIONE

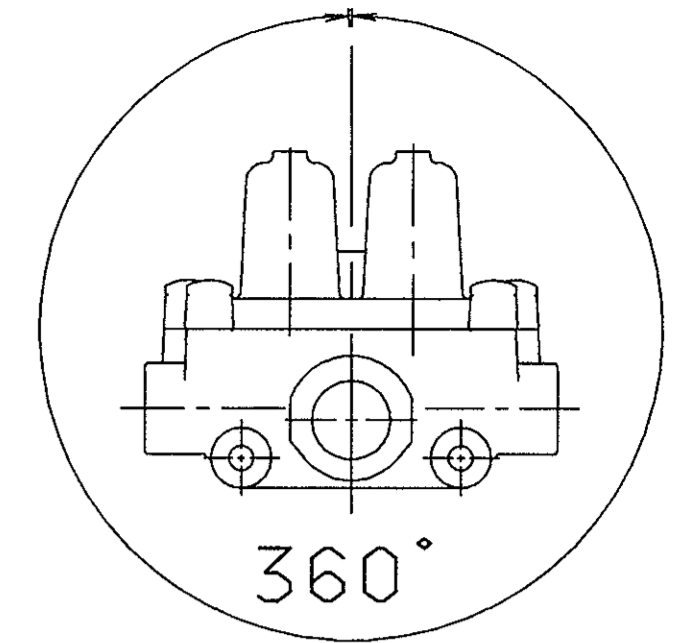
CIRCUIT 1
 KREIS 1
 CIRCUIT 1
 CIRCUITO 1

CIRCUIT 2
 KREIS 2
 CIRCUIT 2
 CIRCUITO 2

CIRCUIT 3
 KREIS 3
 CIRCUIT 3
 CIRCUITO 3

CIRCUIT 4
 KREIS 4
 CIRCUIT 4
 CIRCUITO 4

ⓑ VALVE MAY BE MOUNTED AT ANY ANGLE
 VENTIL KANN IN BELIEBIGER LAGE MONTIERT WERDEN
 LA SOUPAPE PEUT ETRE INSTALLEE A N'IMPORTE QUEL ANGLE
 VALVOLA MONTABILE A QUALSIASI ANGOLO

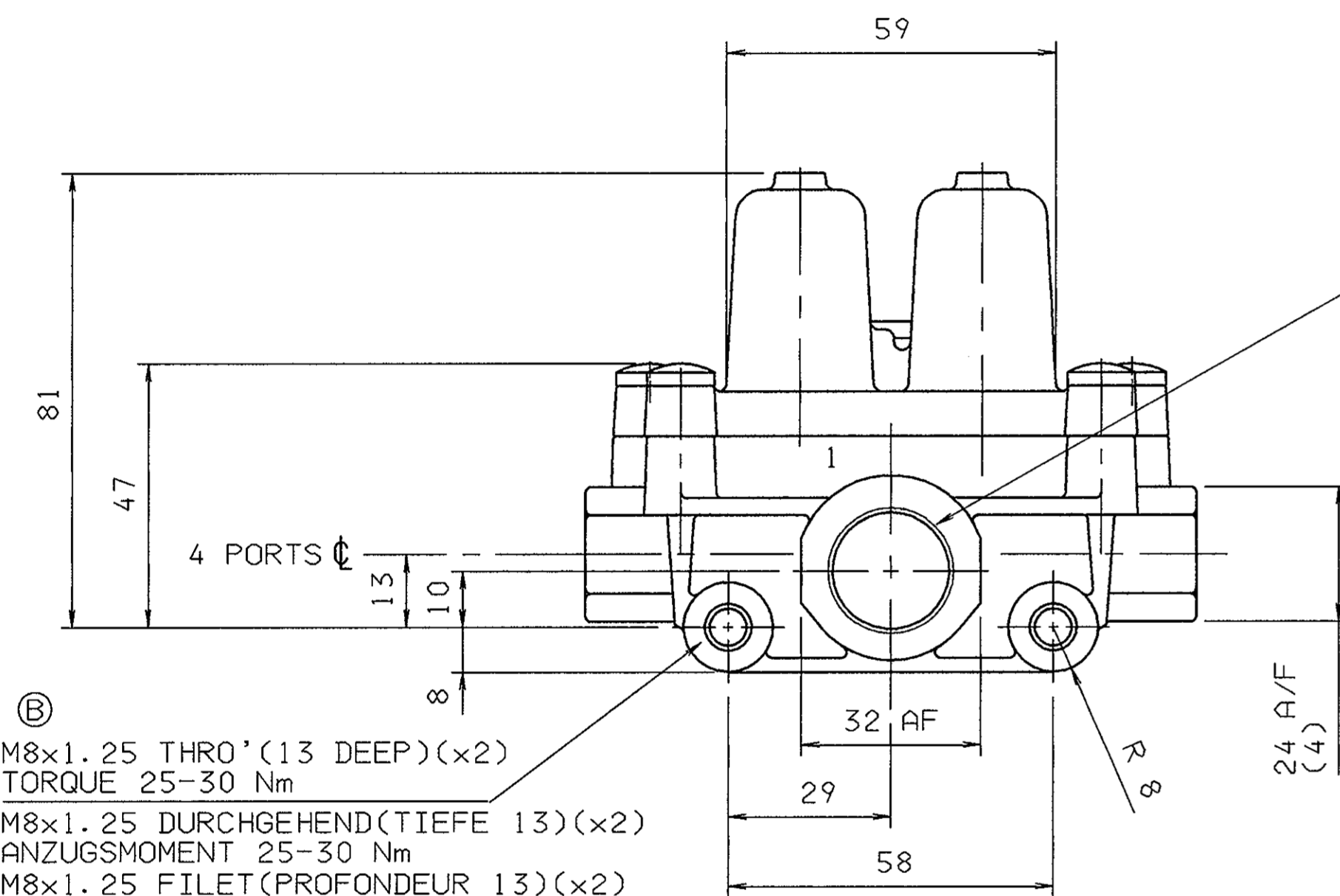


Ⓒ * OPENING PRESSURE 23 TO EXCEED HIGHEST ACTUAL OPENING PRESSURE OF OTHER CIRCUITS BY ≥0.1 BAR. REFER TO DOC. CODE 635

* DER OEFFNUNGSDRUCK DES KREISES 23 MUSS IMMER UM ≥0.1 BAR UEBER DEM HOECHSTEN 1ST-OEFFNUNGSDRUCK DER ANDEREN KRIESE LIEGEN. SIEHE DOC. 635

* LA PRESSION D'OUVERTURE DU CIRCUIT 23 DOIT TOUJOURS EXCEDER LA PLUS HAUT PRESSION D'OUVERTURE DES AUTRES CIRCUITS DE ≥0.1 BAR. VOIR DOC. 635

* LA PRESSIONE DI APERTURA DEL CIRCUITO 23 DEVE SEMPRE SUPERARE LA PIU ALTA PRESSIONE DI APERTURA DEGLI ALTRI CIRCUITI DI ≥0.1 BAR. VEDERE DOC. 635



PORT 1
 M22x1.5-6H x16 FULL THREAD
 JED 152
 TORQUE 55 Nm MAX.

ANSCHLUESSE 1
 M22x1.5-6H x16 DURCHGEHENDES GEWINDE
 JED 152
 ANZUGSMOMENT 55 Nm MAX.

ORIFICES 1
 M22x1.5-6H x16 FILET COMPLET
 JED 152
 COUPLE DE SERRAGE 55 Nm MAX.

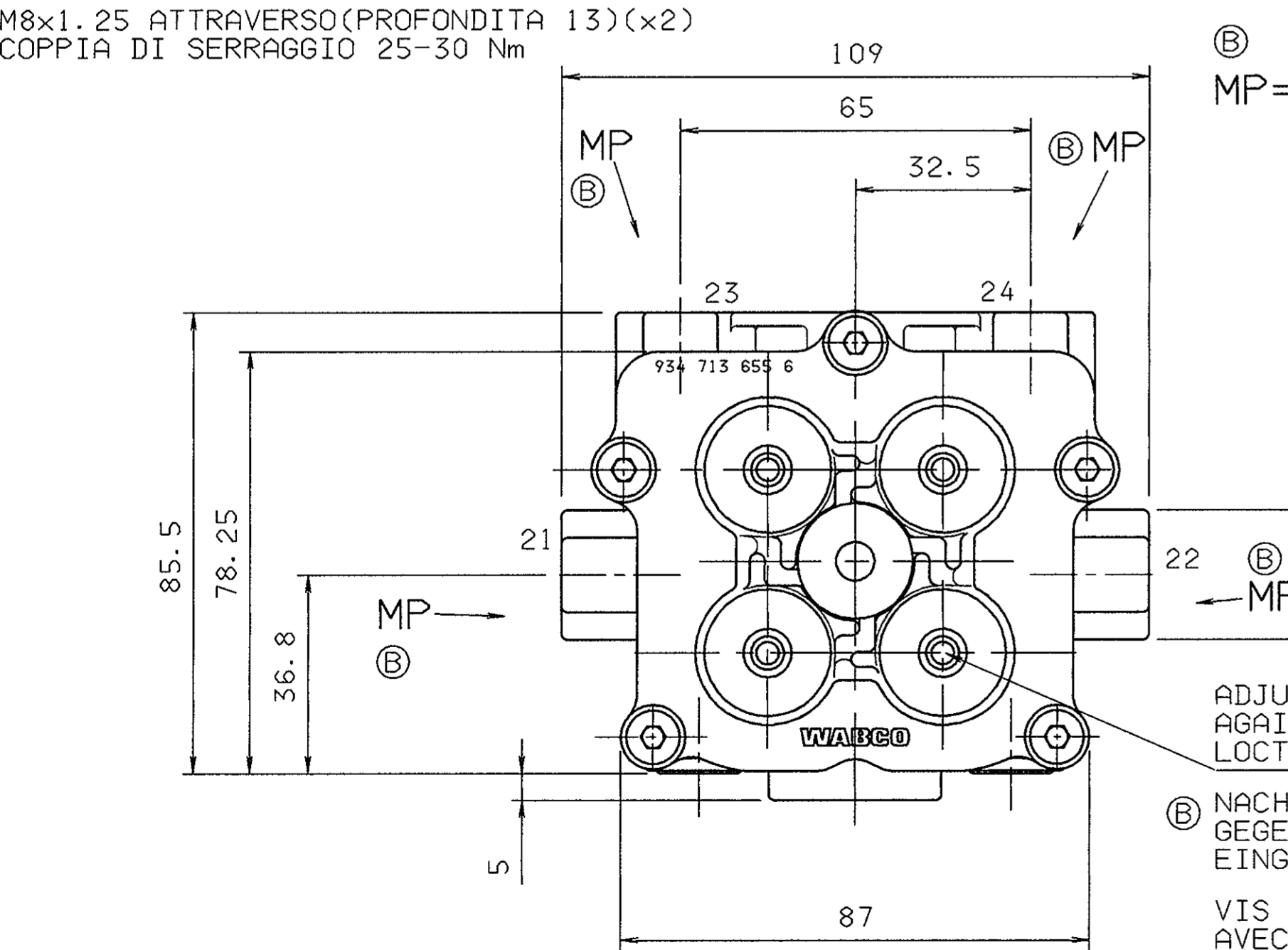
ORIFIZI 1
 M22x1.5-6H x16 FILETTATURA COMPLETA
 JED 152
 COPPIA DI SERRAGGIO 55 Nm MAX.

Ⓒ CORROSION PROTECTION:-
 ALUMINIUM PARTS CHROMATED TO CDS 155 (JED-128P)
 SCREWS MECHANICALLY ZINC PLATED AND YELLOW PASSIVATED (FORD SPEC. S71M)

KORROSIONSSCHUTZ
 ALUMINIUMTEILE CHROMIERT GEMASS CDS 155 (JED-128P)
 SCHRAUBEN MECHANISCH VERZINKT UND GELB PASSIVIERT (FORD SPEZIFIKATION S71M)

PROTECTION ANTICORROSIVE
 PIECES ALUMINIUM CHROMEES POUR CDS 155 (JED-128P)
 VIS MECANIQUEMENT ZINGUEES ET PASSIVEES EN JAUNE (SPEC.FORD S71M)

PROTEZIONE ANTICORROSIONE
 PEZZI IN ALUMINIO CROMATI PER CDS 155 (JED-128P)
 VITI MECCANICAMENTE ZINCATE E PASSIVATE IN GIALLO (SPEC.FORD S71M)



M16x1.5-6H x13 FULL THREAD
 JED 152
 TORQUE 35 Nm MAX.

M16x1.5-6H x13 DURCHGEHENDES GEWINDE
 JED 152
 ANZUGSMOMENT 35 Nm MAX.

M16x1.5-6H x13 FILET COMPLET
 JED 152
 COUPLE DE SERRAGE 35 Nm MAX.

M16x1.5-6H x13 FILETTATURA COMPLETA
 JED 152
 COPPIA DI SERRAGGIO 35 Nm MAX.

ADMISSIBLE TEMPERATURES.
 THERMISCHER ANWENDUNGSBEREICH.
 TEMPERATURE DE SERVICE -40°C TO +90°C
 TEMPERATURA D'ESERCIZIO.

SERVICE PRESSURE.
 BETRIEBSDRUCK. MAX 13 bar.
 PRESSION DE SERVICE.
 PRESSIONE D'ESERCIZIO.

MEDIUM AIR
 MEDIUM LUFT.
 MILIEU AIR.
 FLUIDO ARIA.

Ⓒ ADJUSTING SCREWS SECURED AGAINST TAMPERING WITH LOCTITE AFTER TEST.

NACH PRUFUNG MIT LOCTITE GEGEN UNBEFUGTE EINGRIFFE GESICHERT

VIS DE REGLAGE FIXEES AVEC LOCTITE PAR SECURITE APRES ESSAI

VITI DI REGOLAZIONE FISSATE CONTRO MANOMISSIONE CON LOCTITE DOPO LE PROVE

PORTS ORIFICES	ANSCHLUESSE ATTACCHI	21	22	23	24
OPENING PRESSURE DYNAMIC OEFFNUNGSDRUCK DYNAMISCH PRESSION DE OUVERTURE DYNAM PRESSIONE DI APERTURA DINAM	BAR	6.9 ⁺⁰ _{-0.3}	6.9 ⁺⁰ _{-0.3}	7.0 ⁺⁰ _{-0.3} Ⓒ	6.9 ⁺⁰ _{-0.3}
CLOSING PRESSURE DYNAMIC SCHLIESSDRUCK DYNAMISCH PRESSION DE FERMETURE DYNAM PRESSIONE DI CHIUSURA DINAM	BAR	≥6.4 Ⓒ			
CLOSING PRESSURE STATIC AT FAILURE OF CIRCUIT ... SCHLIESSDRUCK STATISCH BEI AUSFALL VON KREIS ... PRESSION DE FERMETURE STATIQUE EN CAS DE DEFAILLANCE DU CIRCUIT ... PRESSIONE DI CHIUSURA STATICA IN CASO DI DIFETTO DEL CIRCUITO ...	BAR	0	≥5.5	#	≥5.5
		≥5.5	0	≥5.5	≥5.5
		≥5.5	≥5.5	0	≥5.5
		≥5.5	≥5.5	≥5.5	0

DRAWING PRODUCED ON CADAM
 MANUAL CHANGES PROHIBITED

DIMENSIONS IN MILLIMETRES

FURTHER TECHNICAL DATA SEE		L	K	COPYRIGHT	
IDENTIFICATION No.:				DATE	SIGNATURE
CODE FOR DOCUMENT:	SHEET: TO			02/03/95 M. Sanderson	
GENERAL TOLERANCES		G		CHECKED	
RANGE OF NOMINAL DIMENSIONS (mm)		F		02/03/95 M. Flett	
CLASS	I) ≤50	II) >50	III) >180	IV) >400	EXPERT CODE
	0.5	1	1.5	2	310
					P.S. Wellings
1	1	2	3	4	±3'
11	1	2	3	4	±3'
111	2	3.5	5	6.5	±3'
1) TOLERANCE CLASS APPLIED CROSSMARKED		ECN-No	REV	DATE	
		5621	A	02/03/95	
		A1		300	
		512		002	

WABCO

QUADRUPLE CIRCUIT PROTECTION VALVE.
 VIERKREIS - SCHUTZVENTIL.
 VALVE DE PROTECTION LA 4 CIRCUITS.
 VALVOLA DI PROTEZIONE LA 4 CIRCUITI.

PRODUCT SPECIFICATION No. 934 714 110 0
 DOCUMENT CODE 605
 SHEET 1/1