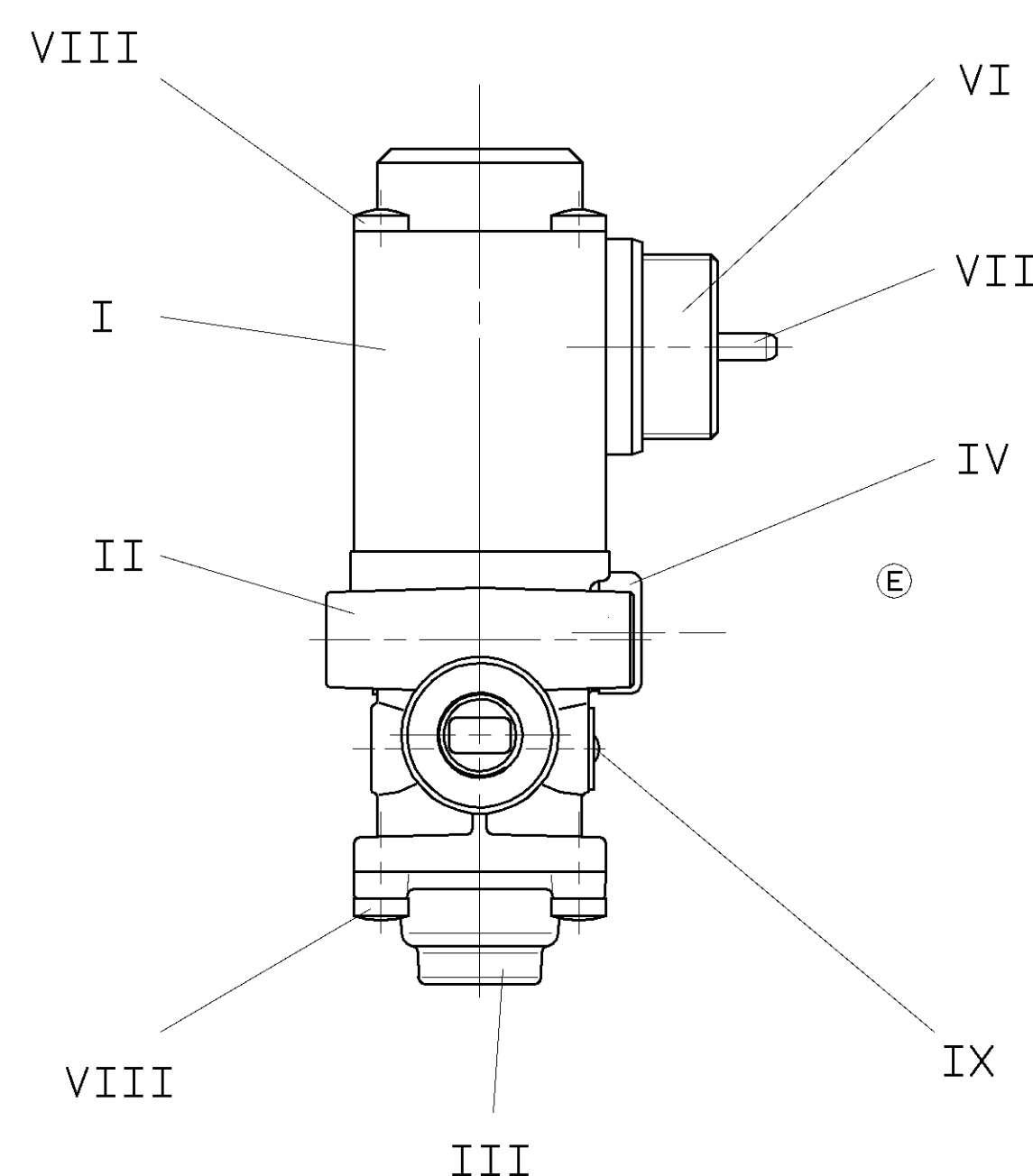
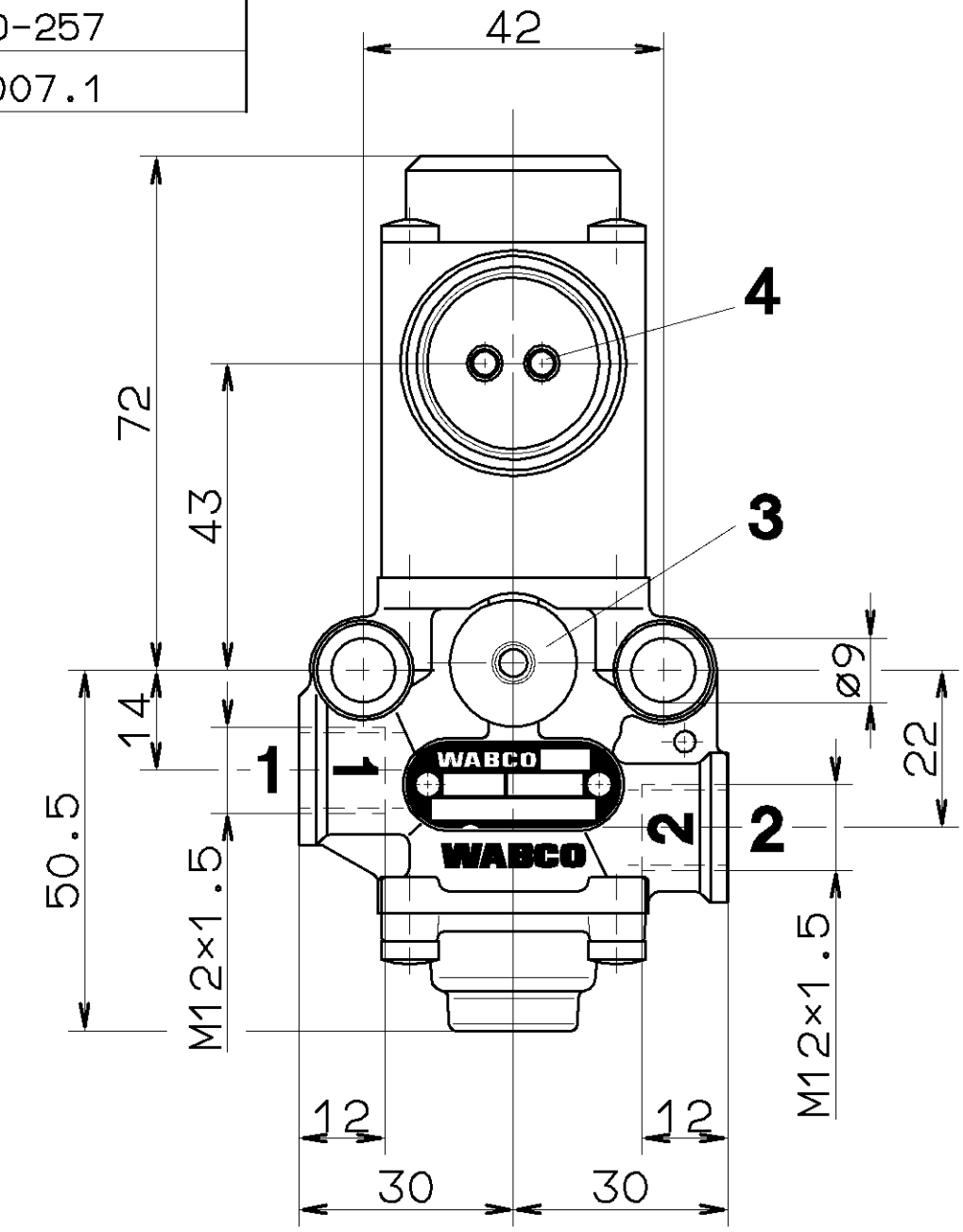
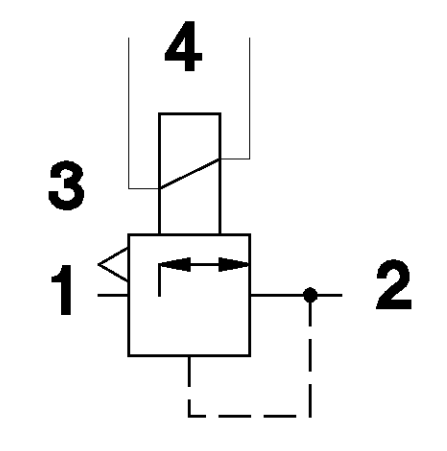
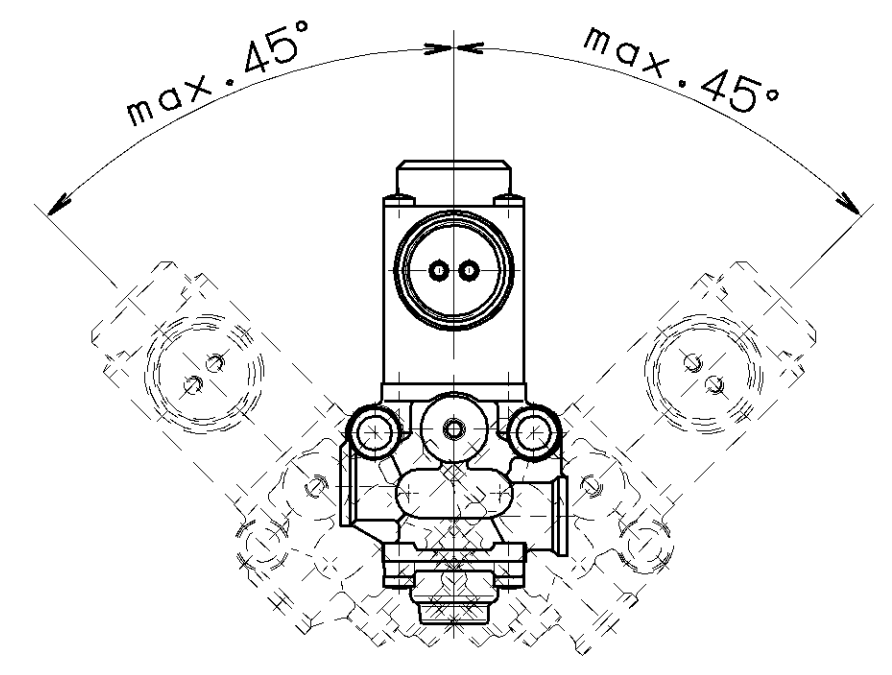
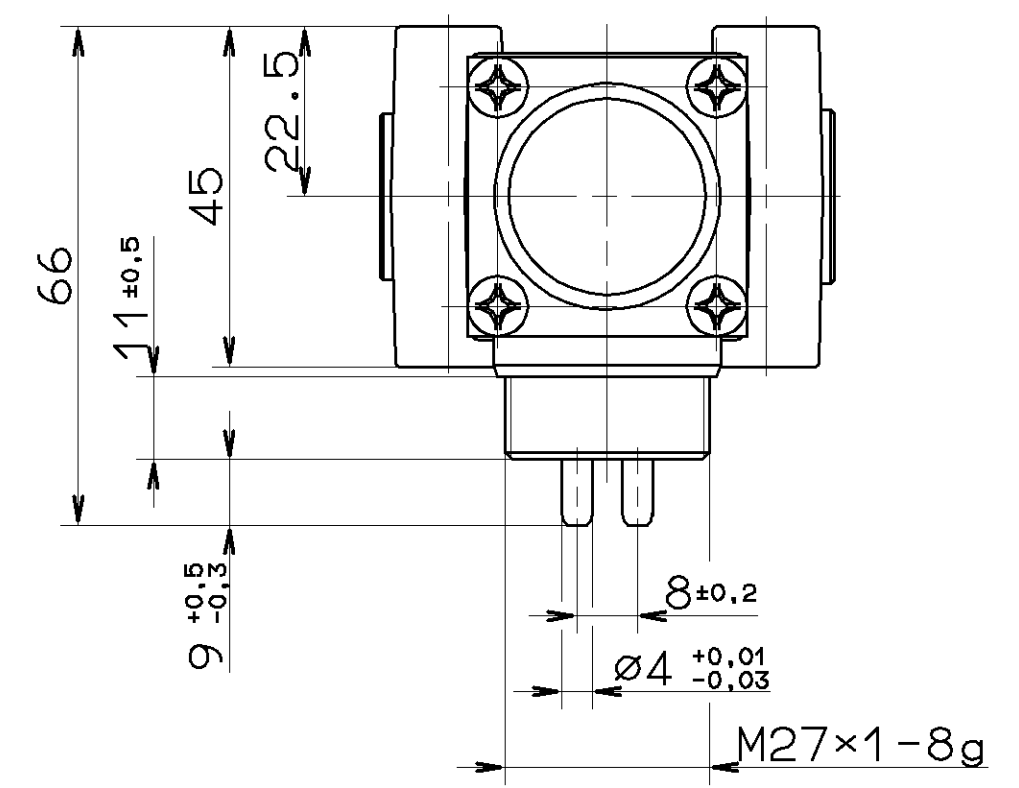


MATERIAL AND SURFACE PROTECTION	
I	Fe JED-020.2 / Zn/C JED-256
II	Al JED-029M1 / C JED-259
III	PBT JED-352.1
IV	Fe JED-691
V	
VI	PA 6.6 JED-559
VII	CuZn JED-076M1 / Gal Ni1 Ag1
VIII	Fe JED-051 / Zn/C JED-257
IX	Al JED-077.1 / JED-007.1



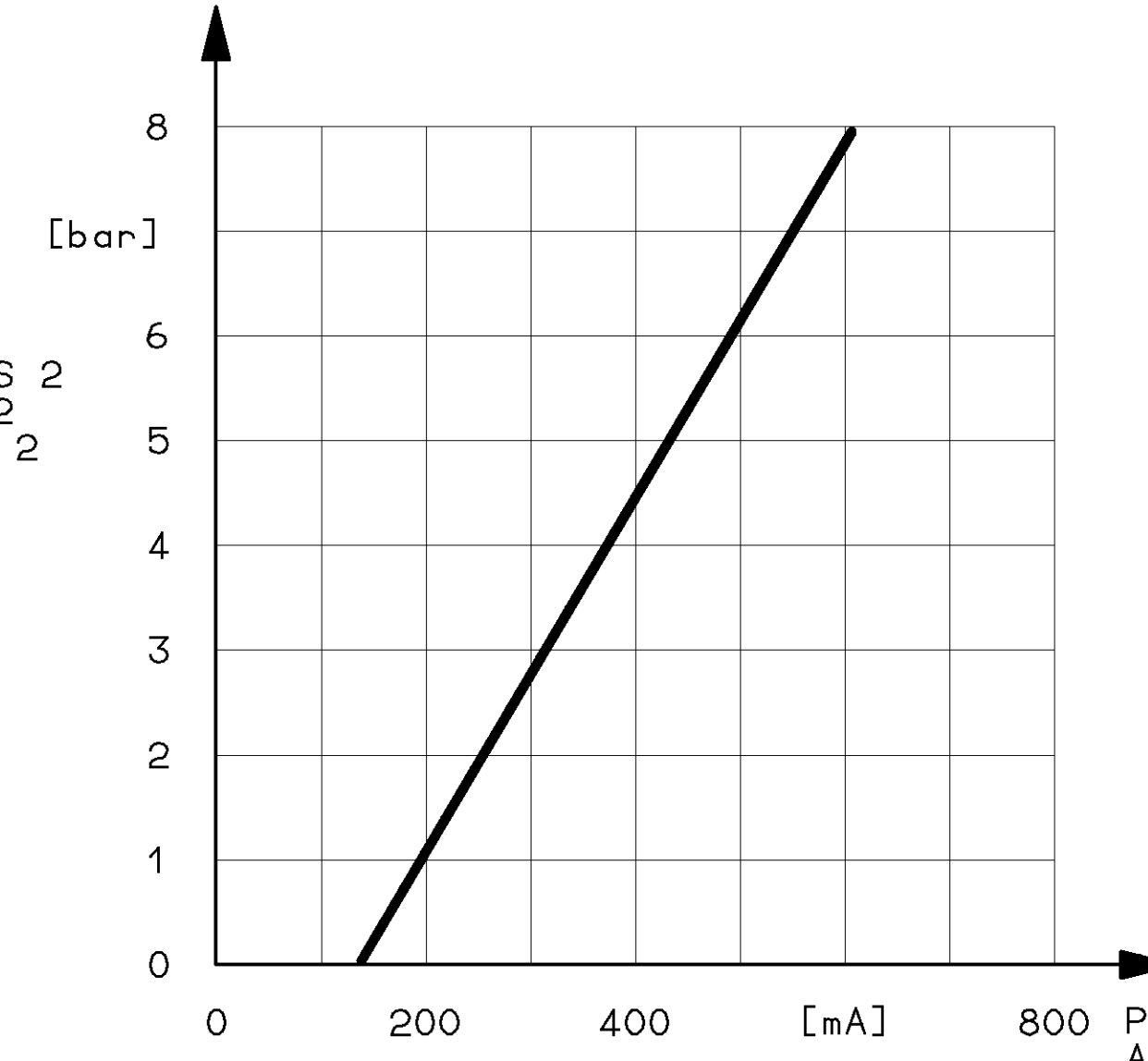
* INSTALLATION POSITION
 EINBAULAGE
 POSITION D'INSTALLATION
 POSIZIONE DI MONTAGGIO



THE VALVE CORRESPONDS TO THE REGULATIONS FOR ELECTROMAGNETIC DEVICES ACCORDING TO VDE 0580
 GERÄT ENTSPRICHT DEN BESTIMMUNGEN FÜR ELEKTROMAGNETISCHE GERÄTE NACH VDE 0580
 LA VALVE CORRESPOND AUX CONDITIONS POUR DES APPAREILS ELECTROMAGNETIQUES SUIVANT VDE 0850
 LA VALVOLA CORRISPONDE ALLE CONDIZIONI PER APPARECCHI ELEKTROMAGNETICHI SECONDO VDE 0580

- 1.1 WORKING MEDIUM : AIR (WATER-, OIL AND ALCOHOL CONTAINING)
 ARBEITSMEDIUM : LUFT (WASSER-, ÖL UND ALKOHOLHALTIG)
 FLUIDE D'UTILISATION : AIR (CHARGE D'EAU, D'HUILE ET D'ALCOOL)
 FLUIDO DI ESERCIZIO : ARIA (ACQUOSO,OLEIFERO E ALCOOLOSO)
- 1.2 WORKING ENVIRONMENT : AIR (WATER- AND SALT CONTAINING)
 UMGEBUNGSMEDIUM : LUFT (WASSER- UND SALZHALTIG)
 FLUIDE AMBIANTE : AIR (CHARGE D'EAU DE SEL)
 FLUIDO AMBIENTE : ARIA (ACQUOSO E SALIFERO)
- 2.1 THERMAL RANGE OF APPLICATION UNDER NORMAL AMBIANT CONDITIONS :
 THERMISCHER ANWENDUNGSBEREICH UNTER NORMALEN UMGEBUNGSBEDINGUNGEN : -40°...+100°C
 PLAGE DE TEMPERATURE EN UTILISATION CONTINUE DE :
 CAMPO D'APPLICAZIONE TERMICA NELLE NORMALI CONDIZIONI AMBIENTALI :
- 2.2 SHORT TERM RESISTANCE TO HEAT :
 KURZZEITIGE WAERMEBESTAENDIGKEIT : MAX. 110°C AT 1h
 RESISTANCE A LA CHALEUR A COURTE DUREE :
 RESISTENZA AL CALORE BREVE TEMPO SOLO :
- 3.1 WORKING PRESSURE (SUPPLY) :
 BETRIEBSDRUCK (VORRAT) : p₁ = 5...8 bar
 PRESSION D'UTILIZATION (ALIMENTATION) :
 PRESSIONE DI ESERCIZIO (ALIMENTAZIONE) :
- 3.2 MAX. PERMISSIBLE WORKING PRESSURE (SUPPLY) :
 MAX. ZULAESSIGER BETRIEBSDRUCK (VORRAT) : p₁ = 10 bar
 PRESSION D'UTILIZATION MAXI ADMISSIBLE (ALIMENTATION) :
 PRESSIONE DI ESERCIZIO MAX. AMMISSIBLE (ALIMENTAZIONE) :
- 3.3 OUTPUT PRESSURE :
 AUSGANGSDRUCK : p₂ = 6 bar / ED = 100% : p₂ = 8 bar / ED = 20%
 PRESSION DE SORTIE :
 PRESSIONE D'USCITA :
- 4 MIN. FLOW PASSAGE /NOMINAL DIAMETER :
 MIN. DURCHFLUSSOEFFNUNG /NENNWEITE :
 MIN. ORIFICE CALIBRE /DIAMETRE NOMINAL :
 MIN. PASSAGGIO LIBERO /DIAMETRO NOMINALE :
- 4.1 PORT 1 - 2 :
 ANSCHLUSS 1 - 2 : 12.6 mm²/NW 4
 ORIFICE 1 - 2 :
 ORIFIZIO 1 - 2 :
- 4.2 PORT 2 - 3 :
 ANSCHLUSS 2 - 3 : 5 mm²/NW 2.5
 ORIFICE 2 - 3 :
 ORIFIZIO 2 - 3 :
- 5 VOLTAGE :
 SPANNUNG : 24 ±2.4 V
 VOLTAGE :
 VOLTAGGIO :
- 6 TYPE OF CURRENT : DIRECT CURRENT
 STROMART : GLEICHSTROM
 NATURE DU COURANT : COURANT CONTINU
 NATURA DELLA CORRENTE : CORRENTE CONTINUA
- 7 SERVICE CONDITION : CONTINUOUS SERVICE
 BETRIEBSART : DAUERBETRIEB
 CONDITION DU SERVICE : SERVICE CONTINU
 CONDIZIONE DI SERVIZIO : SERVIZIO CONTINUO
- 8 MAX. CURRENT :
 MAX. STROM : I_{max} = 0.57 A / ED = 100% : I_{max} = 0.75 A / ED = 20%
 COURANT MAX. :
 CORRENTE MAX. :
- 9 DEGREE OF PROTECTION ACC. IEC 529 :
 SCHUTZART NACH EN 60529; IEC 529 : IP 67
 DEGRE DE PROTECTION SUIVANT IEC 529 :
 GRAFO DI PROTEZIONE SECONDO IEC 529 :
- 10 PROTECTION CLASS :
 SCHUTZKLASSE : III
 CLASSE DE PROTECTION :
 CLASSE DI PROTEZIONE :
- 11 INSTALLATION LIMITATIONS :
 EINBAUBESCHRAENKUNGEN : MAX. DEVIATION OF THE DEVICE FROM THE VERTICAL: 45°
 RESTRICTIONS D'INSTALLATION : MAX. ABWEICHUNG DES GERÄTES VON DER SENKRECHTEN: 45°
 LIMITAZIONE DI MONTAGGIO : ECART MAX. DE L'APPAREIL PAR RAPPORT A LA VERTICALE: 45°
 : DEVIAZIONE MAX. DELL'APPARECCHIO RIFERITO ALLA VERTICALE: 45°
- 12 MAINTENANCE REQUIREMENTS : NONE
 WARTUNGSANFORDERUNGEN : KEINE
 ENTRETIEN : NON
 MANUTENZIONE : NON

PORT 2
 ANSCHLUSS 2
 ORIFICE 2
 ORIFIZIO 2



PORT 4
 ANSCHLUSS 4
 ORIFICE 4
 ORIFIZIO 4

GENERAL SPECIFICATION: JED-034		CAD/CAM DRAWING COPY-PROTECTED	
FURTHER TECHNICAL DATA:		DATE: _____ SIGNATURE: _____	
DOC. CODE:	SHEET: _____ TO: _____	DRAWN: 88-11-22 LICHTENBERG	
GENERAL TOLERANCES		CHECKED: 88-12-01 DR. SCHULTZ	STANDARDIZATION: 88-12-05 PANTZER
RANGE OF NOMINAL DIMENSIONS (± mm)		CLASS	1) 1) TOLERANCE CLASS APPLIED CROSSHARDED
CLASS	1)	0.5	1.0
FINE	X	1.0	2.0
MEDIUM	X	2.0	3.0
COARSE		3.0	5.0
		4.0	6.5
TAPPED HOLES ACC. ISO 4039 / JED-162		60183	3×E 96-08-14
DEN-NO. REV. DATE		50338	6×D 92-08-26
		47297	3×C 91-05-21
		39638	3×B 89-07-14
		39614	4×A 89-04-11
		A 1	141
		635	SHAPE CODE
			REPLACEMENT FOR

WABCO

PROPORTIONAL VALVE
 PROPORTIONALVENTIL
 VALVOLA
 VANNE

PRODUCT IDENTIFICATION NO. 472 250 000 0

DOC. CODE 605 SHEET 1/1

EXP. CODE 7114